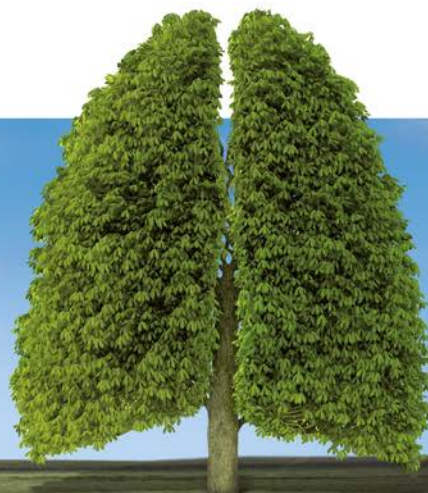


WILAméd

Equipment for Professionals



**AIRcon Gen2
Respiratory
Gas Humidifier**
www.wilamed.com



CE 0197

AIRcon Gen2 Respiratory Gas Humidifier

The comprehensively updated and full featured **AIRcon Gen2** respiratory gas humidifier is one of the most advanced humidifiers available.

As a fully packed humidifier powerhouse, the **AIRcon Gen2** includes all required parts and components you need for a worry-free, quick installation and safe operation.

It's advanced Servo-Control system allows for more precise and efficient humidity control and for a maximum of flexibility, which is essential to maintaining patient's health and safety in a rapidly changing healthcare environment.

The **AIRcon Gen2**'s outstanding improvements allow it to be used in almost any application requiring reliable humidification, from the very low flows in infant ventilation to the very high flows in Nasal-High-Flow-O₂-Therapy in adults.

The **AIRcon Gen2** has been designed for

- ease of use
- adaptability
- simplicity of operation
- ease of maintenance and servicing
- energy efficiency
- long term reliability



Everything from one source

In combination with its specially designed humidifier chambers and heated wire breathing systems, the **AIRcon Gen2** provides a complete respiratory gas humidifying system at your disposal for patients in need of invasive- or non-invasive ventilation for their treatment.

Scope of Delivery

P/N	Description
101200	AIRcon Gen2 humidifier, 230V
101201	AIRcon Gen2 humidifier, 115V
100910	temperature probe, 160cm
100909	temperature probe, 180cm
100929	heating wire adapter (i+e)*
100942	heating wire adapter (i)*
100930	country-specific power cord

Accessories and Mounting


P/N	Description
500186	WILAqua, sterile water 1000ml bottle
500350	WILAMED C200R humidifier chamber, autoclavable
550226	bracket (diameter 25mm) for standard rail (30mm x 10mm)
550301	pole clamp bracket for columns (25mm x 45mm)
550220	mounting kit for standard rail
550227	ventilator cart

Our heated wire breathing systems (single and double limb) are applicable to neonates, children and adults. We offer configuration for clinical and extra-clinical use for all common ventilators.

* i = inspiratory, e = expiratory

Engineered to meet the highest standards of cost-effective, efficient performance

The **AIRcon Gen2** is the respiratory gas humidifier of choice for health care professionals in both – the Critical Care- and Home Care Environment. The pure and clean look of **AIRcon Gen2** fits perfectly into any ventilator.



The image shows the AIRcon Gen2 respiratory gas humidifier, a white device with two blue corrugated breathing tubes. A central control panel features a digital display showing 39.0°C and 37.0°C, and the mode 'IV'. The device is branded with 'WILAméd' and 'AIRcon'.

Maximum Flexibility

- Three modes of operation (IV, NIV, FREE)
- Approved for use in Critical- and Home Care
- Display dimmer for night time operation
- 300+ Configurations of heated wire breathing systems

7 Unique Features

- ACRS – Automatic Chamber Recognition System
- IRCC – Automatic Chamber Water Level Control
- ICE – Individual control of Expiratory heater wire
- EVAP – Event and Alarm Protocol
- APC – Automatic Performance Control
- MPC – Manual Performance Control
- EDA – Easy Droplet Adjustment

Safe

- Best in class alarm management
- IR water level monitoring (High- and Low)
- Event- and alarm protocol with download option to PC
- Real-time temperature and humidity level monitoring
- Automatic shut-off when alarms are being ignored

High Quality

- Best-in-Class TCO
- Manufactured “Made in Germany”

Made in Germany

“As a leading manufacturer of respiratory gas humidification systems for more than 20 years, WILAméd has the technology and application expertise to meet the needs of any respiratory application.”

Contact us today and ensure you have the best humidification solution for your patient available.



Technical Specifications

Technical Information

- **Dimensions:** H 170mm x W 145mm x D 200mm
- **Weight:** approx. 2.3kg, approx. 2.5kg incl. delivery accessories
- **Classification:**
 - Device (protection class according to IEC 60601) Class II
 - Application parts of Type BF
 - Degree of protection by housing IP22

Electrical Specification

- **Operating voltage:**
 - AIRcon Gen2 101200 (220V~ - 240V~)
 - AIRcon Gen2 101201 (110V~ - 120V~)
- **Mains frequency:** 50Hz / 60Hz
- **Power consumption:** max. 315VA
- **Heating plate:** 170W
- **Inspiratory tube heater:** 22V~, 30W

Operating Data

- **Warm-up time:** max. 30 min.
- **Recommended flowrate:** 2 to 80l/min
- **Humidifier system output:**
 - > 33mg/l in the range of 2 – 60l/min
 - > 10mg/l in the range of 2 – 80l/min
- **Maximum operating pressure:** 200mbar⁽¹⁾
- **Continuous noise:** < 50dB (1m)
- **Sound pressure level of the alarm:** max. 65dB
- **Max. volume of water:** 200ml

Application parts

- Heated wire breathing systems
- Temperature probe
- Heating wire adapter

WILAmed GmbH

Medizinische Geräte und Zubehör

Gewerbepark Barthelmesaurach
Aurachhöhe 5–7
91126 Kammerstein (Germany)



Phone: +49 9178 996999-0
Fax: +49 9178 996778
info@wilamed.com
www.wilamed.com

Humidification system

- **Gas leakage at max. operating pressure:** < 10ml/min⁽²⁾
- **Gas leakage at 60 mbar:**
 - Adults < 70ml/min⁽²⁾
 - Children < 40ml/min⁽²⁾
 - Neonates < 30ml/min⁽²⁾
- **Pressure drop:** < 0.02 (mbar*min)/l⁽²⁾
- **Internal Compliance:**
 - Adults 0.5 – 5ml/mbar⁽²⁾
 - Children 0.5 – 4ml/mbar⁽²⁾
 - Neonates 0.5 – 1.5ml/mbar⁽²⁾
- **Flow resistance:**
 - Adults < 0.06mbar/l/min at 30l/min
 - Children < 0.12mbar/l/min at 15l/min
 - Neonates < 0.74mbar/l/min at 2.5l/min

Environment

- **Temperature:**
 - when operating: +18°C to +26°C
 - during storage and transport: -25°C to +70°C
- **Gas inlet temperature:** +18°C to +26°C⁽³⁾
- **Humidity:**
 - when operating: 0 – 93% non-condensing
 - during storage and transport: 0 – 93% non-condensing
- **Atmospheric pressure:**
 - in operation 700hPa – 1060hPa
 - during storage and transport: 500hPa – 1200hPa

Measurement Range

- **Temperature sensor:**
 - 9.5°C – 50°C (patient-side)
 - 5°C – 80°C (humidification chamber)

⁽¹⁾ Unless the user instructions for the humidification chamber used prescribes lower maximum pressures
⁽²⁾ Depending on the humidification chamber used and the breathing tube system used
⁽³⁾ The maximum gas outlet temperature of the therapy device at 23°C ambient temperature is 32°C

